



BUFFALO PHILHARMONIC ORCHESTRA  
YOUTH CONCERT SERIES

# Rehearse, Reuse, Recycle!

3rd-6th Grades

## Birthday Lesson BPO History & Your Musical Timeline

### Objective

Using the history and timeline of the BPO worksheet, students will create a personal time line of important musical events they have experienced.

### Suggested Materials

- History and Timeline of the Buffalo Philharmonic Orchestra
- Personal Timeline worksheet

### National Music Standards

9 – Understanding music in relation to history and culture

### Procedure

- 1) As a class, read the History of the BPO. What events helped the Orchestra to grow and change throughout the past 75 years?
- 2) Review the Timeline of important events for the orchestra.
- 3) Brainstorm a list of possible musical events that students may have experienced (i.e. – began playing an instrument, concerts they have attended, places they have sung, etc.).
- 4) Model personal music time lines – beginning with birth and leading to the present day, think of at least 5 musical events you have experienced and when you may have experienced them. Complete your own personal music time line using the worksheet provided.
- 5) When students are complete, have them share with a partner or the class some of the events that have shaped them musically.

### Assessment

Collect and review student work. Has the time line been completed? Did students share appropriate musical events through their work?



# My Musical Timeline

Name \_\_\_\_\_

My Birthdate



Date \_\_\_\_\_  
Event \_\_\_\_\_

\_\_\_\_\_  
\_\_\_\_\_  
\_\_\_\_\_

Date \_\_\_\_\_  
Event \_\_\_\_\_

\_\_\_\_\_  
\_\_\_\_\_  
\_\_\_\_\_



Date \_\_\_\_\_  
Event \_\_\_\_\_

\_\_\_\_\_  
\_\_\_\_\_  
\_\_\_\_\_



Date \_\_\_\_\_  
Event \_\_\_\_\_

\_\_\_\_\_  
\_\_\_\_\_  
\_\_\_\_\_

Today



Date \_\_\_\_\_  
Event \_\_\_\_\_

\_\_\_\_\_  
\_\_\_\_\_  
\_\_\_\_\_



Date \_\_\_\_\_  
Event \_\_\_\_\_

\_\_\_\_\_  
\_\_\_\_\_  
\_\_\_\_\_



Date \_\_\_\_\_  
Event \_\_\_\_\_

\_\_\_\_\_  
\_\_\_\_\_  
\_\_\_\_\_



Date \_\_\_\_\_  
Event \_\_\_\_\_

\_\_\_\_\_  
\_\_\_\_\_  
\_\_\_\_\_



Rehearse, Reuse, Recycle!



Buffalo Philharmonic Orchestra

## **A BRIEF HISTORY**

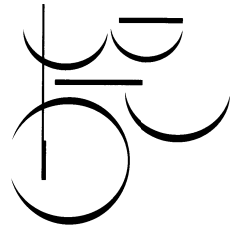
*A WPA Project*

In 1935, a group of people formed the Buffalo Philharmonic Orchestra Society, and under the federal Works Progress Administration program they hired 70 Buffalo musicians. The following year the orchestra incorporated and hired a well-known conductor named Franco Autori. In 1940, the Orchestra celebrated the opening of Kleinhans Music Hall. The construction of this acoustically perfect hall recognized the importance and quality of the Buffalo Philharmonic. Since its opening, Kleinhans has served as the Orchestra's home.

Over the years, people around the world have recognized the Buffalo Philharmonic Orchestra because of its expert musicians and distinguished conductors. Franco Autori conducted the orchestra from 1936 -1945 in the first exciting years of the Orchestra's existence. William Steinberg followed in 1945. Under his leadership the BPO made its first recording and went on its first American tour.

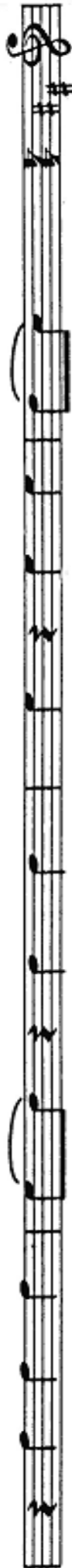
When Josef Krips took the podium in 1953, many people wanted to hear more modern and American music. In 1962, a young modern-minded conductor, Lukas Foss, fulfilled that desire for the people. He led the BPO to national and international fame with concerts and recordings of modern and avant-garde music. Nine years later, the BPO appointed Michael Tilson Thomas as its music director. Maestro Thomas was 27 years old and one of the youngest conductors of a major symphony orchestra. He was also Buffalo's first American born conductor. Julius Rudel took over as music director in 1971. Not only was he a superb conductor, but he also was a skilled financial manager. Another young conductor, Semyon Bychkov, took the podium from 1985 to 1989, and up until 1998, Maximiano Valdes served as music director.

Today the BPO enjoys the fine leadership of JoAnn Falletta. Named as Music Director in 1998, she is one of only a few women to serve as music director of a major symphony orchestra. Under her leadership, the Philharmonic is continually recording new CDs and is heard regularly on NPR.



# Buffalo Philharmonic Orchestra

The City of Buffalo



- 1825, Erie Canal opens
- 1832, Buffalo incorporated as a city
- 1833, Buffalo lighthouse built
- 1855, Niagara Suspension Bridge completed
- 1860s, Buffalo a major stop on the Underground Railroad to Canada
- 1881, Electrical power from Niagara Falls' water
- 1901, Pan-American Exposition in Buffalo
- 1905, Albright-Knox Art Gallery opens
- 1927, Dedication of the Peace Bridge
- 1948, WBEN begins TV broadcasting
- 1954, New York Thruway opens at Buffalo end
- 1964, Chicken wings first served at the Anchor Bar
- 1977, Blizzard in Buffalo
- 1987, First International Friendship Festival
- 1999, Erie Canal terminus re-discovered

**1800**      **1850**      **1900**      **1950**      **2000**

BPO Music Directors			
Franco Autori	Joseph Krips	Michael Tilson Thomas	Semyon Bychkov
William Steinberg	Lukas Foss	Julius Rudel	Maximiano Valdez



Music In Buffalo

- 1825, Village Band plays at Thayer Brothers hanging
- 1827, Buffalo's first music store opens
- 1851, Buffalo's first great public concert: Jenny Lind, "Swedish Nightingale"
- 1860s, Buffalo is a major world producer of musical instruments
- 1883, First authentic Buffalo music hall
- 1886-1898, Buffalo Orchestra active
- 1920-1929, Buffalo Symphony active
- 1926, Zorah Berry series begins
- 1932, Mayor's Committee for Unemployment supports formation of the Buffalo Symphony Orchestra under a WPA grant
- 1934, Edward and Mary Kleinhans die, leaving money to the city
- 1940, Dedication of Kleinhans Music Hall
- 1947, BPO produces its first recording
- 1964, Buffalo called the "New Music Capital of the Western Hemisphere"
- 1985, Buffalo Philharmonic Orchestra 50th Anniversary celebration
- 1988, BPO go on a 7 city European tour
- 2004, BPO returns to Carnegie Hall